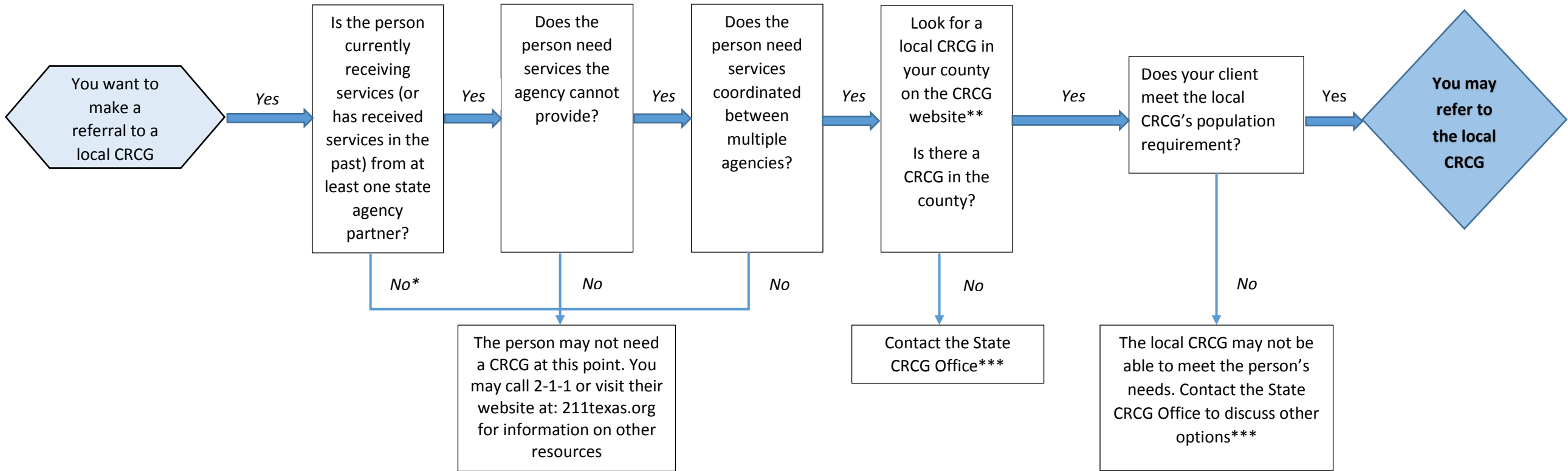




# Community Resource Coordination Groups (CRCGs) of Texas

## Referral Eligibility Requirements



### Examples of state agencies and partners the person may be involved with:

- Local mental health authority (LMHA)
- Local intellectual and developmental disability authority (LIDDA)
- State, regional and local government service providers
- Housing authority
- Aging and disability resource center (ADRC)
- Department of State Health Services (DSHS)
- Texas Workforce Commission (TWC)
- Health and Human Services (HHSC)

- Probation and parole officers
- School districts and counselors
- Department of Family and Protective Services (DFPS)
- Medicaid services/SNAP benefits and services
- Area agency on aging (AAA)
- Texas Correctional Office on Offenders with Medical or Mental Impairments (TCOOMMI)

\*The person may still qualify for a CRCG staffing if they are engaged in services with a community-based partner

\*\*CRCG Website: <https://crg.hhs.texas.gov/>

\*\*\*Contact the State CRCG Office at: [CRCG@hsc.state.tx.us](mailto:CRCG@hsc.state.tx.us) or 512-206-5255